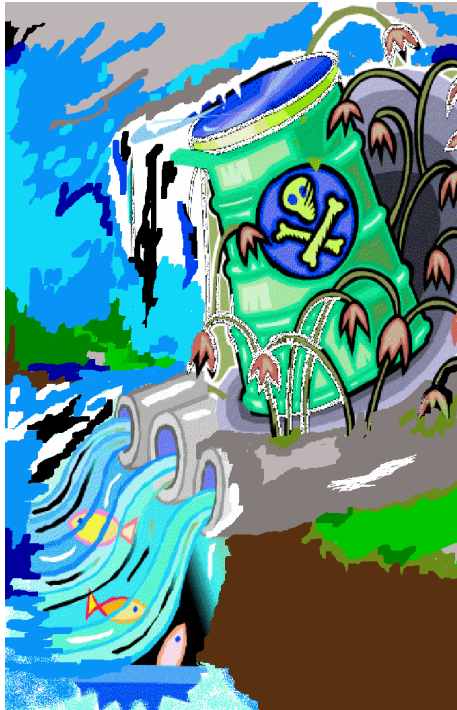


## Stop Storm Water Runoff Pollution! ■



---

Help our community

## Help Our Community, Stop Storm Water Runoff Pollution! ■

*City of Soledad*  
248 Main Street  
Soledad, CA 93960  
Phone (831) 678-3963  
Fax (831) 679-3965  
<http://www.cityofsoledad.com>

To REPORT CLOGGED CATCH BASINS, CALL:  
City of Soledad Public Works Department (831) 678-3963  
between 8:00 A.M to 5:00 P.M  
After 5:00 P.M. call (831) 678-3963 extension 121

TO REPORT ILLEGAL DUMPING CALL:  
City of Soledad Public Works Department at (831) 678-3963  
between 8:00 A.M to 5:00 P.M.  
After 5:00 P.M. call (831) 678-3963 extension 121

TO RECYCLE USED MOTOR OIL CALL:  
Tri-Cities Disposal and Recycle Service at (888) 678-6798

TO DISPOSE OF HOUSEHOLD HAZARDOUS WASTE CALL:  
Johnson HHW Collection Facility, Salinas Valley Solid Waste  
Authority Disposal at (831) 675-2143  
Sun Street HHW Facility, Salinas Valley Solid Waste Authority  
Disposal at (831) 424-5520

---

The City of Soledad is  
counting on you!

## The City of Soledad Storm Water Management Plan ■



---

Protect the  
Environment, Stop  
Storm Water Pollution!

## WHAT IS THE OBJECTIVE? ■

---

The City of Soledad developed and adopted the Storm Water Management Plan (SWMP) in 2004.

The objective of the SWMP is to protect the storm water quality by limiting the entrance of pollutants into the City of Soledad storm water system.

## WHAT IS RUNOFF?

Runoff is water from rain, agricultural or landscape irrigation, or from other sources that flows over the paved surface.

## WHAT IS STORM WATER POLLUTION?

When the storm water runoff flows over impervious surfaces; such as pavements, roofs, compacted soils and rock outcrops, it can collect debris, chemicals, dirt, and other pollutants. For example, automobile oil, grease and debris can be carried by storm water runoff into any water body causing pollution and adverse effects on plants, fish, animals and people.

## WHAT IS A NONPOINT SOURCE POLLUTANT?

Nonpoint source pollutants are pollutants that cannot be traced to a single pipe, or single point of source.

## IS STORM WATER TREATED? ■

---

The storm water that is collected and transported in the storm drain system flows directly to the river or ocean without any treatment. The final destination of any pollutant that is illegally discharged into the storm drain system is our rivers and oceans!

## REDUCING STORM WATER RUNOFF IN OUR COMMUNITY

You can prevent pollution by doing some of the following household and automobile activities:

### HOUSEHOLD & HOME ACTIVITIES

---

- 1) Never discharge anything down the storm drain system.
- 2) Sweep paved areas to keep waste away from the storm water system. Do not use water to clean your sidewalks or driveways.
- 3) Clean up your pet waste
- 4) Buy less toxic household products.
- 5) Store all toxic products and use them properly.
- 6) Filter and reuse paint thinner or brush cleaners.
- 7) Take unwanted paints, cleaners and chemicals to an approved Household Hazardous Waste Facility.

## PERSONAL AUTOMOTIVE CARE ■

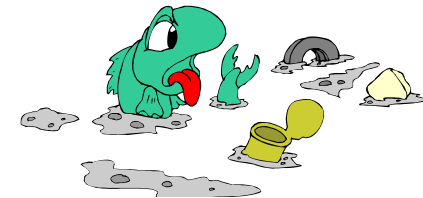
---

- 1) Recycle used motor oil and antifreeze.
- 2) Inspect and maintain your car to reduce leakage of oil, antifreeze and other fluids.
- 3) Use a commercial car wash that treats or recycles its wastewater, or wash your car on your yard so the water infiltrates into the ground.



## PET CARE ACTIVITIES THAT PREVENT STORM WATER POLLUTION.

---



- 1) Carry a pooper-scooper or plastic bag with you to pick up your pet's waste when walking your dog. Pet's waste can be washed up into the storm drain system.
- 2) Dispose pet waste by flushing it down the toilet or placing it in the trash.